



1300 West Industrial Blvd
Suite 2
Round Rock, TX 78681
512-388-2396 Tel
512-388-2859 Fax

Email Proposal

Date: September 3, 2008

Pages: 3

To: Philip L. Cole
Idaho State University

Tel: 208-282-5799

Fax: 208-282-4649

From: Mark Wells

Subject: Softwall cleanroom – **Revision 1**

We are please to provide our proposal for the new softwall cleanroom you have requested.

Changes from last version:

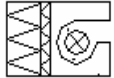
- Both areas 14 ft ceilings
- Both areas ISO class 7



Architectural:

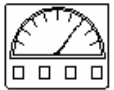
- 1) **Scope:** Approximately 840 sf of space, consisting of a nominal 20 ft x 30 ft x 14 ft high enclosure with adjacent 12 ft x 20 ft x 10 ft enclosure. Enclosure is quoted as **class 10,000 (ISO 7)**.
- 2) **Main structure** framing is 4” steel posts with tube steel frame perimeter and cross members, with steel gussets at each post. Total of 8 posts. **There are no center posts.** Ceiling framing is extruded aluminum, bolt together, factory gasketed inverted “T” members.
- 3) **Finish:** All framing has factory **baked white powder coat** polyester enamel finish.
- 4) **The self-supporting structure** will be installed in an existing air-conditioned space.
- 5) **Walls:** Walls are 40 mil clear vinyl curtains, hung from the perimeter framing. Curtains short of the floor to allow airflow to exit the room into the surrounding space. .

- 6) **Entrances:** There are two 8 ft x 8 ft strip curtain doorways, consisting of 8" wide, 60 mil thick strips with 2" overlaps.
- 7) **Airflow** for cleanroom versions is *single pass type*, with air drawn into the fan powered hepa filters in the ceiling and discharged back into the surrounding space through the gap between the bottom of the curtain and the floor. Filtered air change rate is 30 air changes per hour minimum in each area.



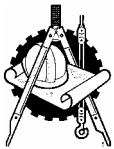
Mechanical:

- 1) **Filters** are new hepa rated fan powered hepa filters (FFU) in the ceiling. Units are 99.99% efficient @ 0.3 μ , 120V, with variable speed control. Each unit has a top mounted prefilter. **15 hepa units are included.**
- 2) **Air-conditioning** is not included. Cleanroom temperature inside room will be approx. 1 deg F warmer than surrounding space.



Electrical:

- 1) **Lighting** is sealed layin troffer type, with T-8 high efficiency, 4 tubes each. **There are 16 fixtures in the large area and four fixtures in the smaller area.** Anything less will provide inadequate light levels.
- 2) Hepa filters and lights are provided with **pre-wired modular cords** and post mounted switches for hepa filters and lights. (five 120V/20A circuits recommended).



Design, Documentation, Project Management:

- 1) **Drawings, assembly instructions, and operations and maintenance manual** are provided with shipment.
- 2) **On-site assembly** is by customer. Optional on-site assembly by KTEC technicians is quote below.
- 3) **Test and Certification is not included** and arranged by customer if desired.



Items Not Included and Provided by Others:

- ◆ Demo or relocation of existing interferences.
- ◆ Power circuits to softwall point of connection.
- ◆ Process power or utility design or installation
- ◆ New flooring
- ◆ Temperature or humidity control.
- ◆ Fire protection sprinklers.
- ◆ Moving existing furniture or equipment.
- ◆ Phone or Data cable work.
- ◆ Sales Tax



Freight: FOB Austin, Texas

Unit is shipped KD, recommend a dedicated van, approx. cost \$ 4000.



Taxes:

Sales, use, real estate, or personal property taxes are NOT included.



Terms:

- ◆ 30% upon submittal of approval drawings, net 10 days
- ◆ Balance net 30 days after shipment



Schedule:

- ◆ Approval drawings: 1 week after receipt of order
- ◆ Fabricate and ship materials: 5 - 6 weeks
- ◆ Total time ARO: 6 - 7 weeks



Costs: (not including sales tax)

- a) **Cleanroom, class 10,000 (ISO class 8), shipped KD:** **\$ 55,547**
- b) **Optional on-site assembly** by KTEC technicians, including travel and expenses:
ADD: \$5,980

Last page of proposal